

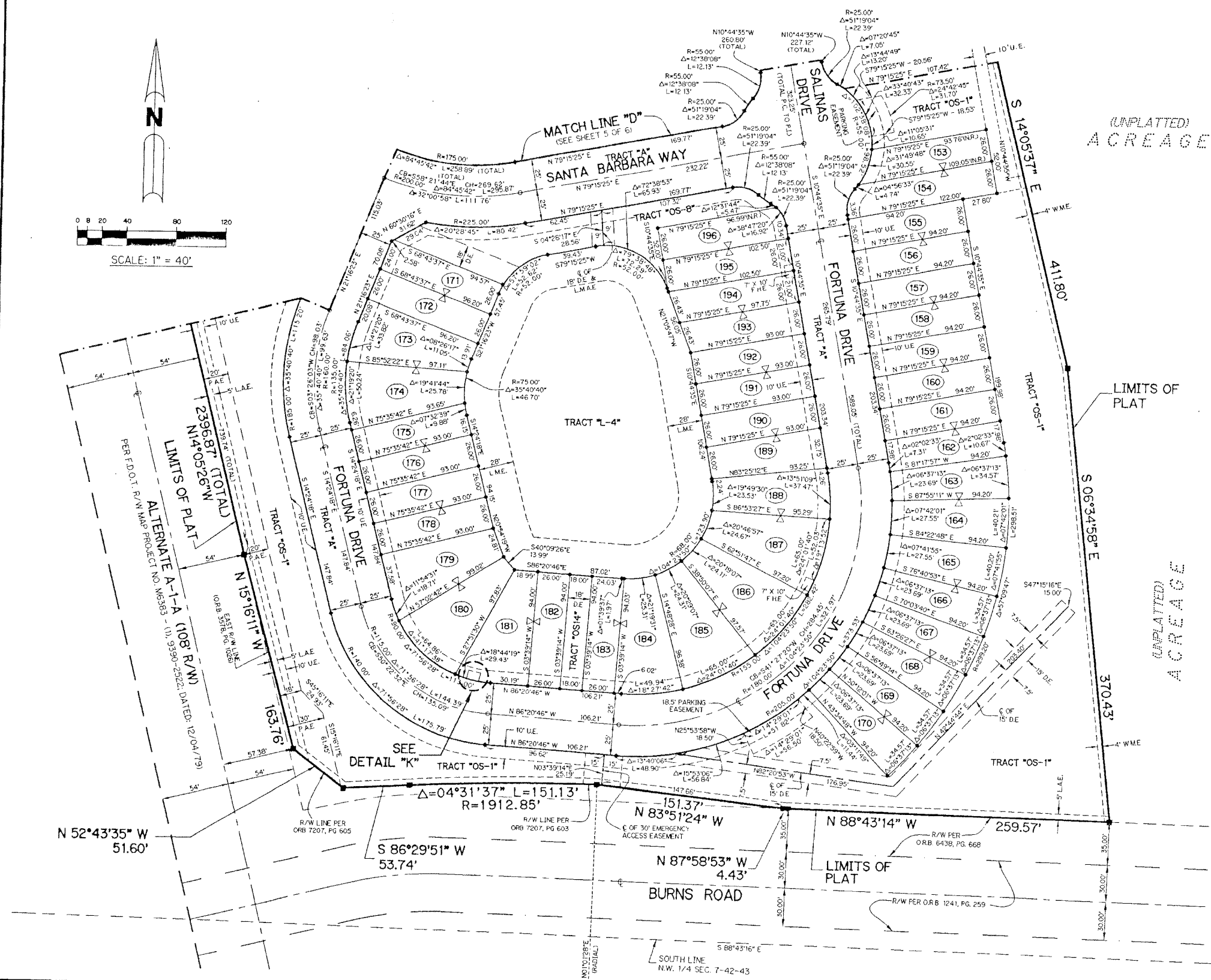
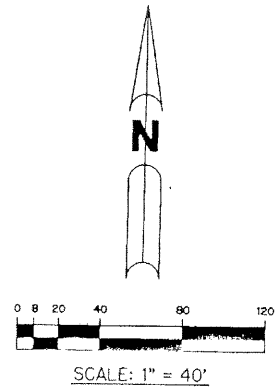
# CATALINA LAKES

A PARCEL OF LAND LYING IN SECTION 7, TOWNSHIP 42 SOUTH, RANGE 43 EAST  
CITY OF PALM BEACH GARDENS, PALM BEACH COUNTY, FLORIDA

SHEET 6 OF 6 JANUARY, 2001

THIS INSTRUMENT PREPARED BY  
PERRY C. WHITE, P.S.M. 4213, STATE OF FLORIDA  
LAWSON, NOBLE AND WEBB, INC.  
ENGINEERS PLANNERS SURVEYORS  
420 COLUMBUS DRIVE, SUITE 110  
WEST PALM BEACH, FLORIDA 33409  
LB 6674

169

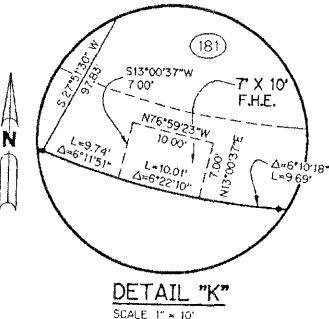


(UNPLATTED)  
ACREAGE

LIMITS OF  
PLAT

(UNPLATTED)  
ACREAGE

- LEGEND:**
- - SET PERMANENT REFERENCE MONUMENT, L.B. #6674
  - - SET 5/8" IRON ROD WITH CAP NO. L.B. 6674
  - - SET PERMANENT CONTROL POINT NO. L.B. 6674
  - - FOUND PERMANENT REFERENCE MONUMENT
  - Δ - DELTA ANGLE
  - BT - BUFFER TRACT
  - CL - CENTERLINE
  - CB - CHORD BEARING
  - CH - CHORD LENGTH
  - DB - DEED BOOK
  - D.E. - DRAINAGE EASEMENT
  - F.H.E. - FIRE HYDRANT EASEMENT
  - L - ARC LENGTH
  - L.A.E. - LIMITED ACCESS EASEMENT
  - L.M.A.E. - LAKE MAINTENANCE ACCESS EASEMENT
  - (N.R.) - NON-RADIAL
  - N.T.S. - NOT TO SCALE
  - OS - OPEN SPACE TRACT
  - ORB. - OFFICIAL RECORD BOOK
  - P.A.E. - PUBLIC ACCESS EASEMENT
  - P.B. - PLAT BOOK
  - PGS. - PAGES
  - R - RADIUS
  - S.E. - SIDEWALK EASEMENT
  - U.E. - UTILITY EASEMENT
  - ⊗ - INDICATES COMMON BUILDING LINE
  - W.M.E. - WALL MAINTENANCE EASEMENT
  - NPBCID - NORTHERN PALM BEACH COUNTY IMPROVEMENT DISTRICT
  - (P) - PLAT DIMENSION
  - OB - MEASURED DIMENSION
  - N 737648.0171  
E 905258.2326 - DENOTES STATE PLANE COORDINATES



KEY MAP  
N.T.S.

